

Leslie's Album

Make a Baltimore-album-style wall quilt using your favorite appliqué technique.

SPECIFICATIONS

Skill Level: Intermediate

Quilt Size: 31" x 37"



INSTRUCTIONS

Preparing the Appliqué Pieces

Step 1. Trace appliqué shapes onto the paper side of the fusible web referring to patterns for number to cut; cut out shapes, leaving a margin around each one.

Step 2. Fuse shapes to the wrong side of fabrics as directed on patterns for number and color to cut; cut out shapes on traced lines. Remove paper backing.

Completing the Quilt

Step 1. Fold and crease A to mark the vertical and horizontal centers.

Step 2. Cut the bias strip into two 6" pieces for swag; three 5", one 2" and two 5½" pieces for bouquet; and two 39" pieces for border vines.

Step 3. Fold each length of bias in half with wrong sides together along the length; stitch a ¼" seam allowance to make a tube. Insert ¼" bias bar with seam centered and press.

Step 4. Apply ¼"-wide fusible web to the wrong side of each stem piece.

Step 5. Center and pin the vase, bouquet and stem pieces on A, referring to Figure 1 for positioning. For stems apply cut bias strips as follows: 5" for bottom and center, 5½" for middle, and 2" for top. When satisfied with the placement, fuse shapes in place.

Step 6. Center the top floral swag ½" from top raw edge referring to Figure 1 for positioning; when satisfied with placement, fuse shapes in place.

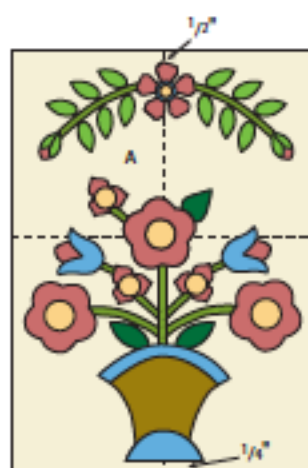


Figure 1

Step 7. Draw a diagonal line from corner to corner on the wrong side of each B square.

Step 8. Layer a B square with a C square with right sides together; stitch ¼" on each side of the marked line as shown in Figure 2; cut apart on the marked line to make two B-C units, again



Leslie's Album
Placement Diagram 31" x 37"

FABRIC	#STRIPS & PIECES	CUT	#PIECES	SUBCUT
Measurements based on 42" usable fabric width.				
Scraps light and dark green prints*		Appliqué pieces as per patterns		
¼ yard gold tonal*		Appliqué pieces as per patterns		
¼ yard brown tonal*		Appliqué pieces as per patterns		
¼ yard small cream/tan print*	2	2½" x 42"	19 4	2½" B squares 2½" D squares
¾ yard blue tonal*	2	2½" x 42" Appliqué pieces as per patterns	19	2½" C squares
½ yard red tonal*	4	2½" x 42" binding Appliqué pieces as per patterns		
⅝ yard cream tonal*	1	16½" x 22½" A		
¾ yard green tonal*		120"— ¼"-wide bias strips Appliqué pieces as per patterns		
¾ yard large cream/tan print*	2 2	6" x 26½" E 6" x 31½" F		
Backing		37" x 43"		

SUPPLIES

- Batting 37" x 43"
- All-purpose thread to match fabrics
- Quilting thread
- ¾ yard 18"-wide fusible web
- 3½ yards ¼"-wide fusible web
- 2½ yards fabric stabilizer
- ¼" bias bar
- Basic sewing tools and supplies

*Baltimore Album fabric collection by Patty Harants for Windham Fabrics.

referring to Figure 2. Repeat with all B and C squares to complete 38 B-C units.

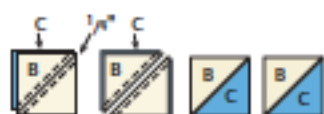


Figure 2

Step 9. Join four B-C units to make a four-unit section as shown in Figure 3; press seams in one direction. Repeat to make two four-unit B-C sections. Repeat to make two reversed four-unit B-C sections, again referring to Figure 3.



Figure 3



Figure 4

Step 10. Join one four-unit and one reversed four-unit B-C section to complete the top row as shown in Figure 4; press seam to one side. Repeat to make the bottom row and sew to the top and bottom of the appliquéd center as shown in Figure 5; press seams toward A.



Figure 5

Step 11. Join B-C units to make one each five-unit and reversed five-unit sections and one each six-unit and reversed six-unit sections as shown in Figure 6. Join one each five- and six-unit section to make a side row as shown in Figure 7. Repeat to make a reversed side row, again referring to Figure 7.

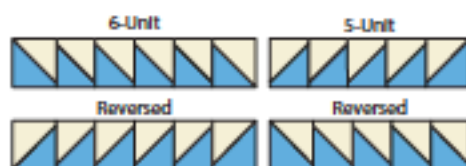


Figure 6



Figure 7

Step 12. Sew a D square to each end of each side row; press seams toward D.

Step 13. Sew a D/side row to opposite sides of the pieced center; press seams toward A.

Step 14. Sew E to opposite long sides and F to the top and bottom of the pieced center; press seams toward E and F.

Step 15. Arrange and pin a 39" bias strip with flowers, buds and leaves along each side of the appliquéd center referring to the Placement Diagram for positioning of pieces; when satisfied with placement, fuse shapes in place.

Step 16. Cut two 15" x 36" pieces of fabric stabilizer and

pin to the wrong side of the completed top.

Step 17. Using thread to match fabrics and a very narrow zigzag stitch, stitch all fused shapes in place. Remove fabric stabilizer.

Finishing the Quilt

Step 1. Sandwich batting between the completed top and prepared backing piece; pin or baste layers together to hold flat.

Step 2. Quilt as desired by hand or machine; remove pins or basting. Trim batting and backing even with the top.

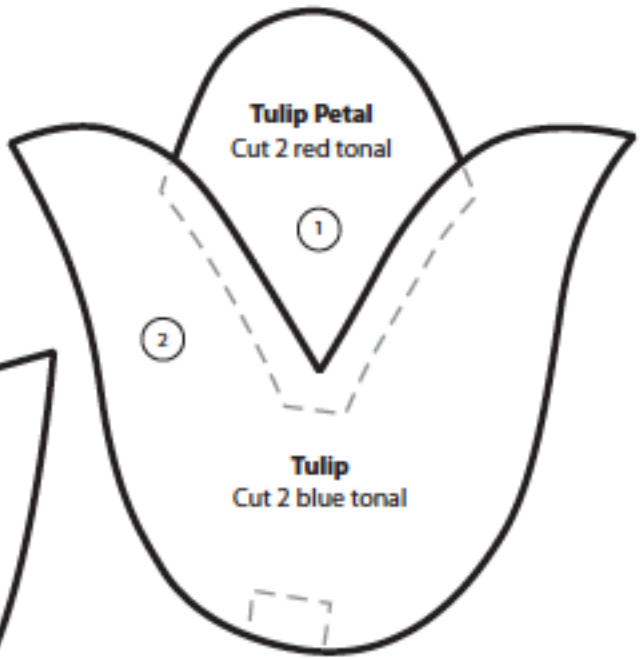
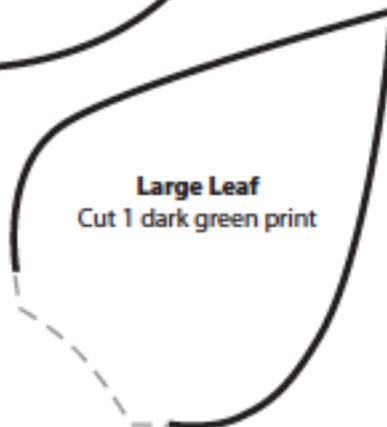
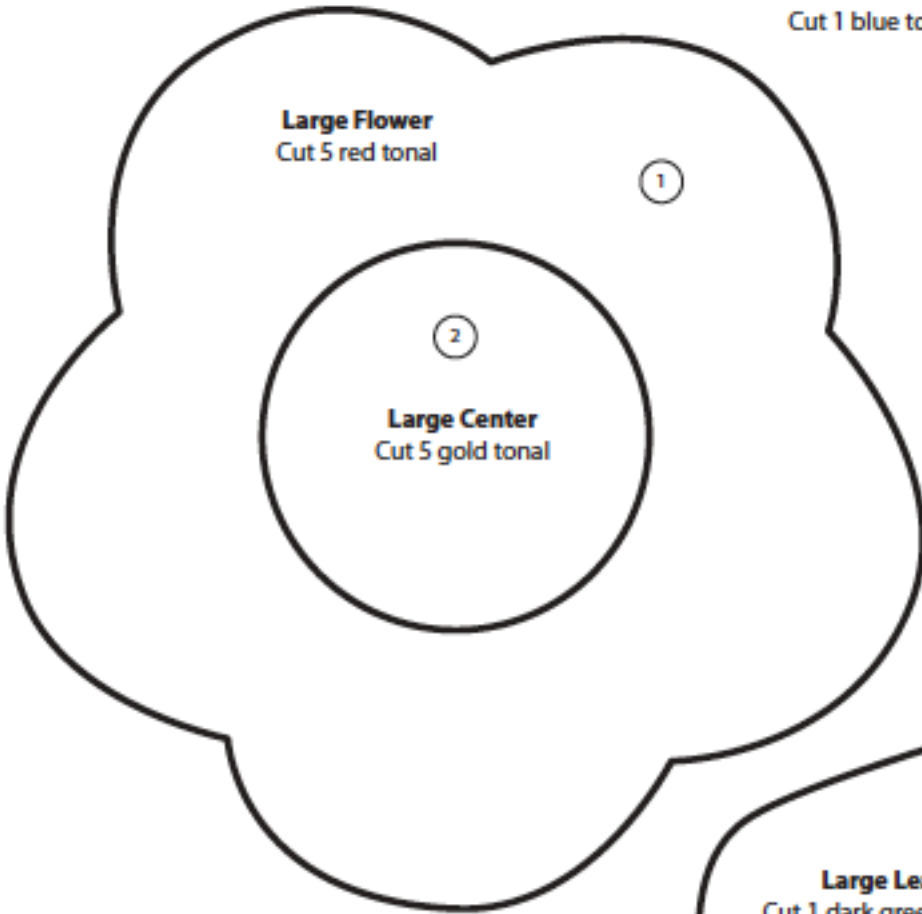
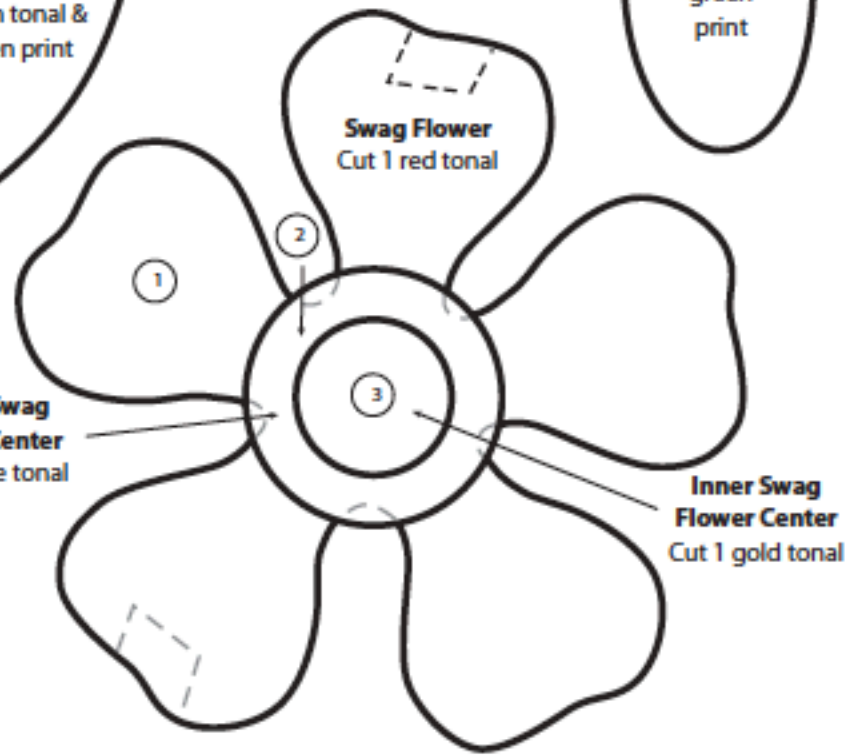
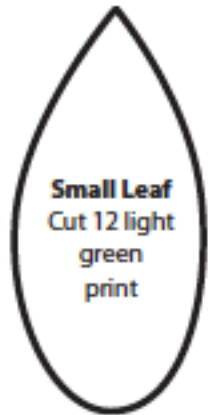
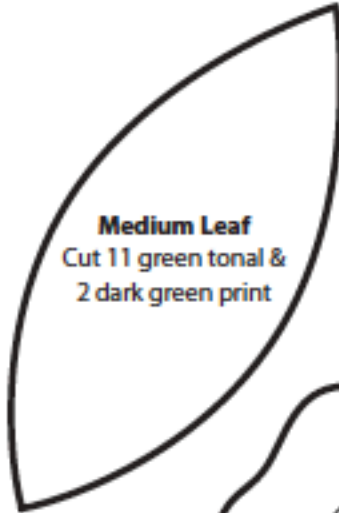
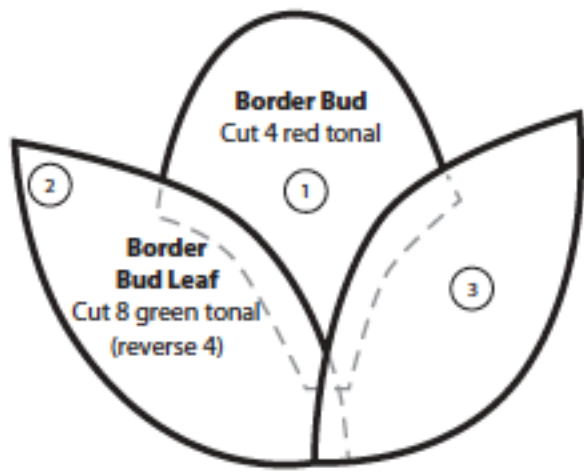
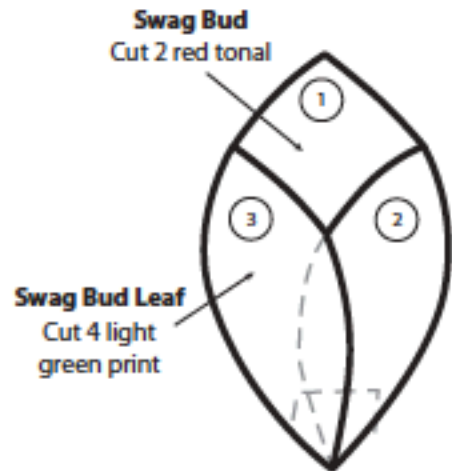
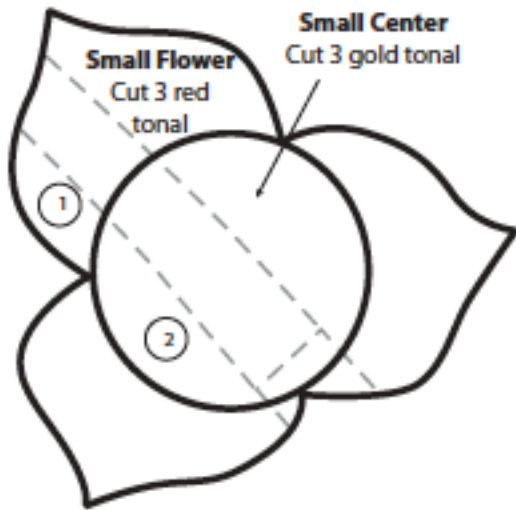
Step 3. Join the binding strips with right sides together on short ends to make one long strip; press seams open.

Step 4. Press the strip in half with wrong sides together along length.

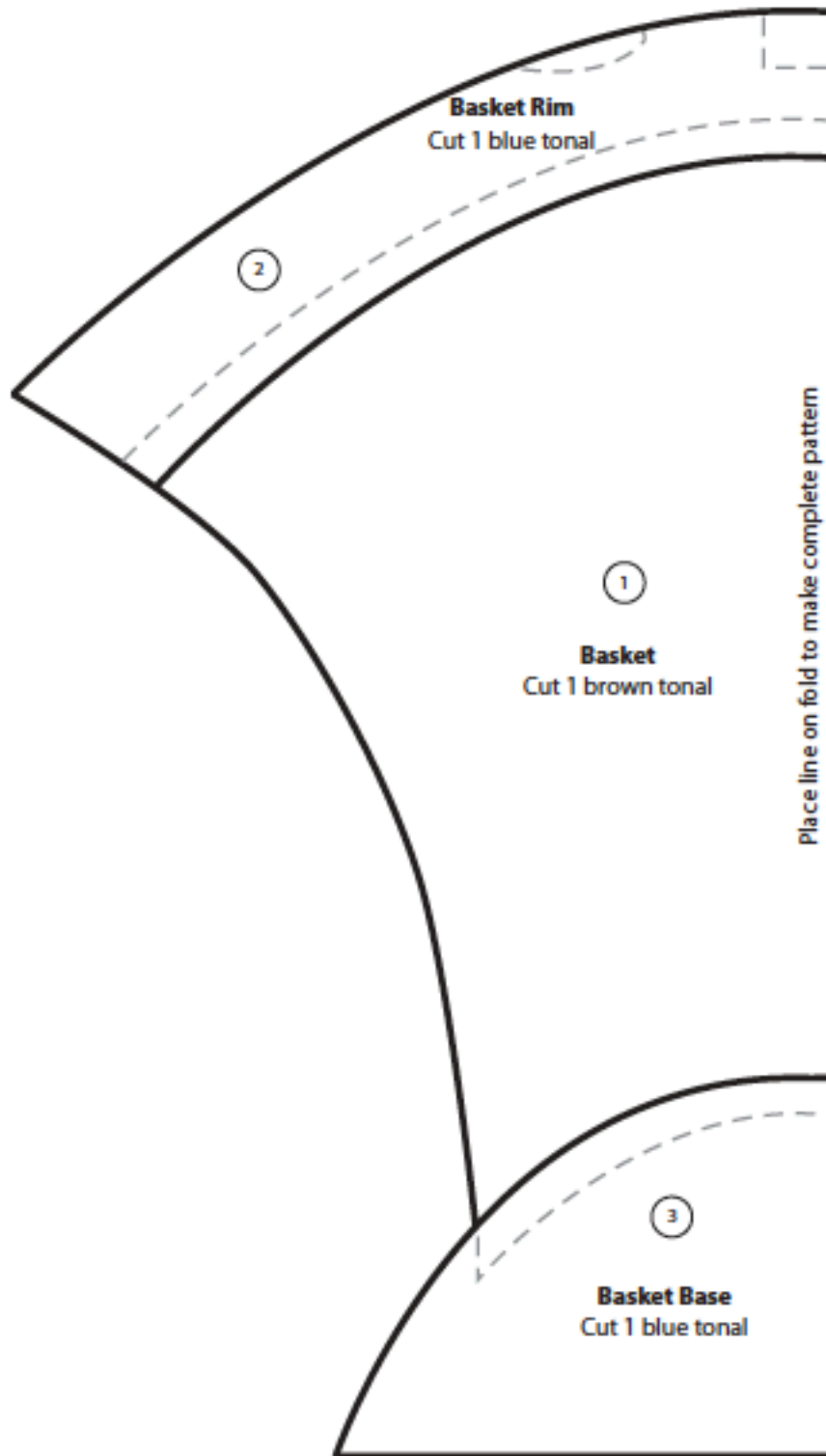
Step 5. Sew the binding to the quilt front edges using a 1/2" seam allowance, mitering corners and overlapping ends.

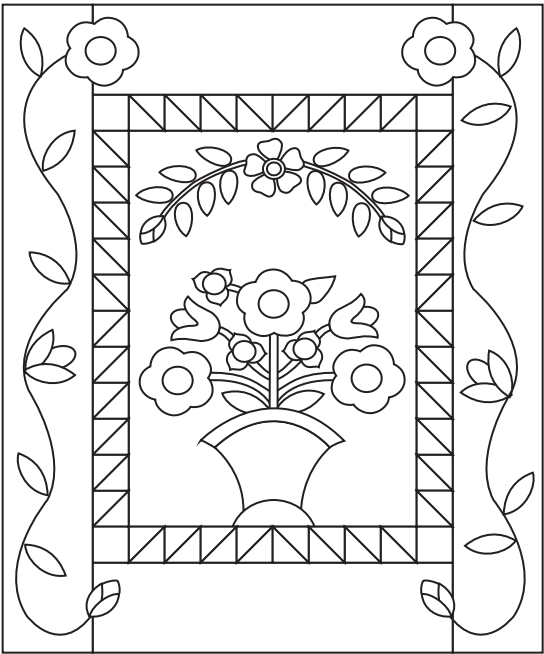
Step 6. Fold binding to the back side and stitch in place to finish. *Note: The binding on the quilt shown was stitched to the back side edges, folded to the front and stitched in place close to the edge using a fancy machine stitch. QW*

LESLIE'S ALBUM TEMPLATES



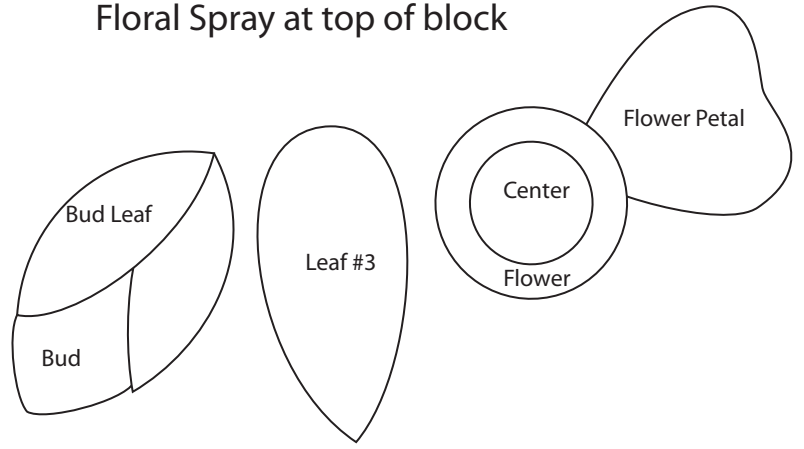
LESLIE'S ALBUM TEMPLATES



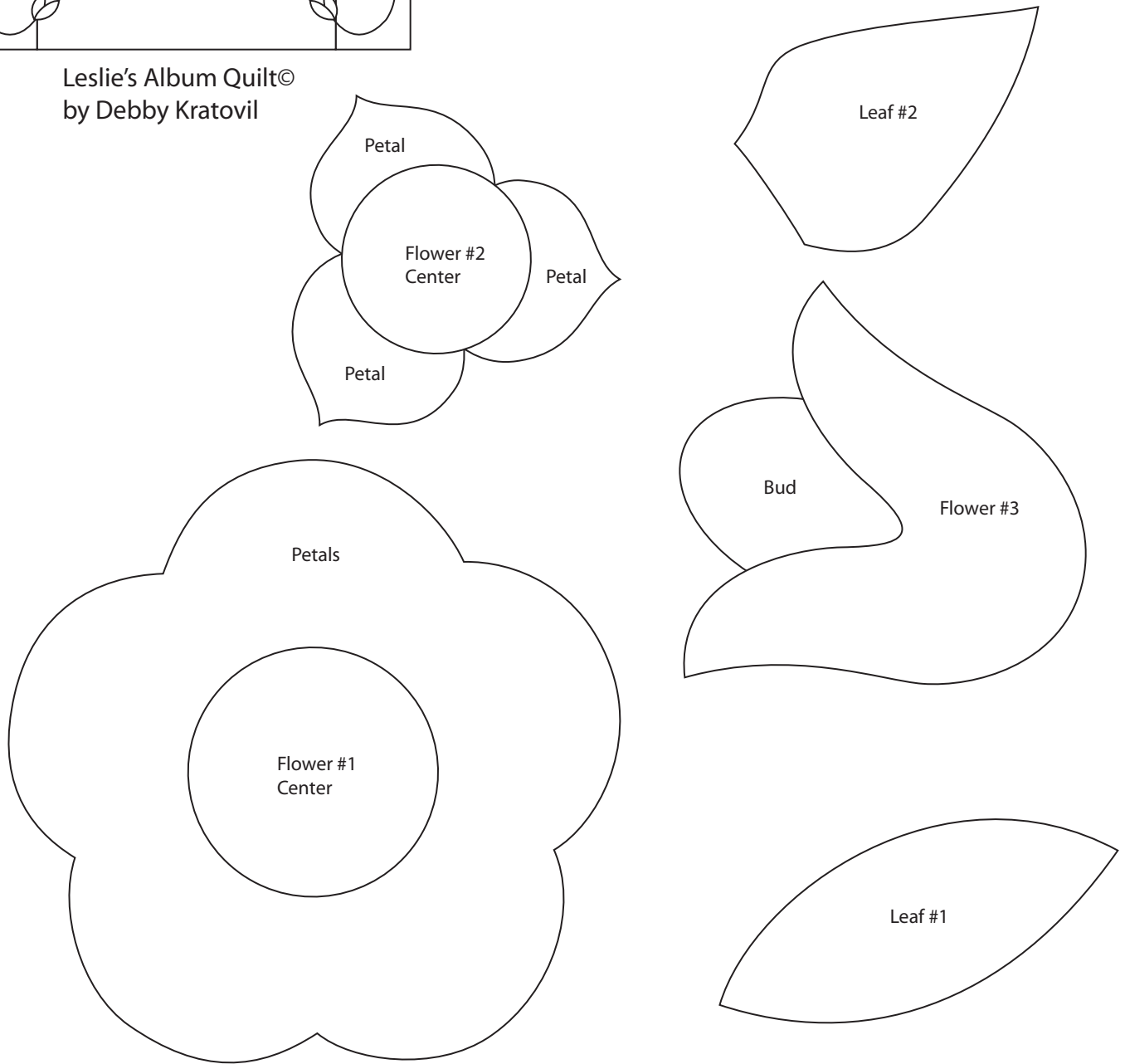


Leslie's Album Quilt©
by Debby Kratovil

Floral Spray at top of block



Flowers, greenery in basket



Leslie's Album Quilt© by Debby Kratovil
Center Block: 16" x 22"

Full Size Templates for Basket
Add Seam Allowances

