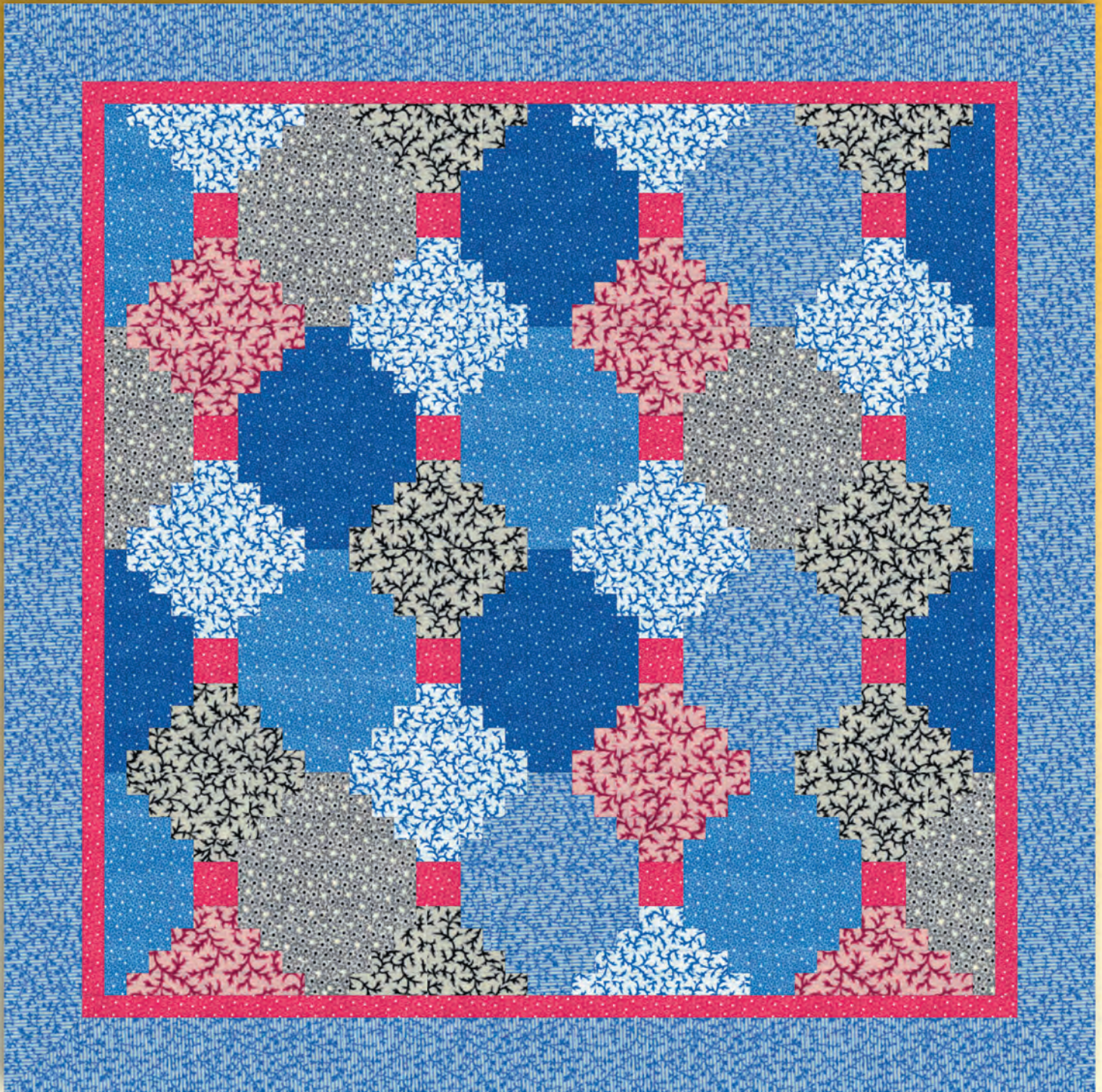


Lancaster County



Fabric designed by Mary Koval for Blank Quilting
Quilt designed by Debby Kratovil for Blank Quilting
Finished Size is 77" x 77"



2 Bridge Street, Suite 220, Irvington, NY 10533 • Toll Free: 888-442-5265 • Fax 914-478-4278 • www.BlankQuilting.com

Lancaster County

Fabric designed by Mary Koval for Blank Quilting
Quilt designed by Debby Kratovil for Blank Quilting

Finished Size: 77" x 77"
Finished Block Size: 15"

All seam allowances are 1/4". Read all directions before beginning. Press all seams as you sew.

Materials:

Fabric A: 3 yds of 5780 Blue (blocks, binding and border)

Fabric B: 1 yd of 5781 Blue

Fabric C: 7/8 yd of 5781 Black

Fabric D: 3/4 yd of 5782 Blue

Fabric E: 5-7/8 yd of 5782 Slate (5 yards for quilt backing)

Fabric F: 7/8 yd of 5782 Black

Fabric G: 3/4 yd of 5781 Red

Fabric H: 3/4 yd of 5782 Rose

Batting: 83" x 83" (allows for 3" or more around all sides)

Cutting Instructions:

Refer to the block diagrams on the next page to determine the size and number of strips to cut for each block coloring. Each block is composed of one center (all of which are 5182 Rose) and four other fabrics.

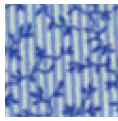
Sewing Instructions:

1. From Fabric G, cut 16 squares 3-1/2" x 3-1/2". These are the block centers for each of the 16 blocks.
2. Each block uses one Fabric G square and four fabrics from the above list. Cut strips according to the block schematics and the sizes indicated in the block assembly diagram.
3. Piece the Courthouse Steps block beginning with the center 3-1/2" square, adding 2" strips (rounds), following the piecing diagram. Strips are pressed after each seam, always toward the outside of the block.
4. Using the diagrams, sew the required number of blocks for a total of 16 blocks. Unfinished size is 15-1/2".

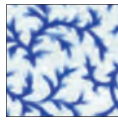
Quilt Assembly:

5. Lay the 16 blocks out using the quilt picture, taking care to align the colors so that they create the secondary pattern as shown. Sew the blocks together into four block rows. Press seams open to reduce bulk.
6. Sew the four block rows together into the quilt center. It now should measure 60-1/2" x 60-1/2".
7. Cut six strips 2" x wof of the Rose 5182. Sew together to make two 2" x 60-1/2" inner border strips and sew to quilt sides. Press seams toward the Rose fabric. From the remaining 2" Rose strips, piece to make two 63-1/2" x 63-1/2" for the remaining two sides (top and bottom) and sew to quilt center.
8. Cut 8 strips 7-1/2" x wof of the 5780 Blue for the outer borders. Piece two strips together and trim to 78" length. Repeat for the remaining 3 pairs. Sew borders to quilt sides, mitering the corners. Press seams well.
9. Layer and quilt as desired.
10. Cut 8 strips 2-1/4" x wof of the border print/stripe (5780) and piece together and use for binding.

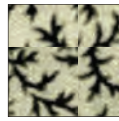
Block diagrams on following page.



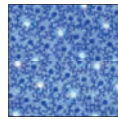
Fabric A



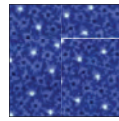
Fabric B



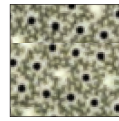
Fabric C



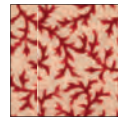
Fabric D



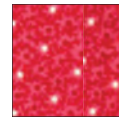
Fabric E



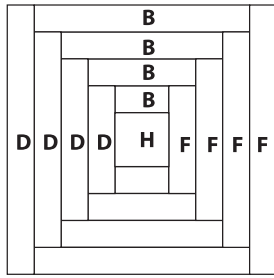
Fabric F



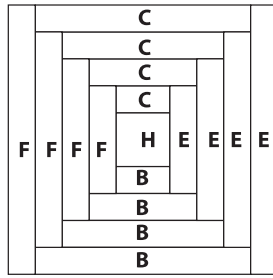
Fabric G



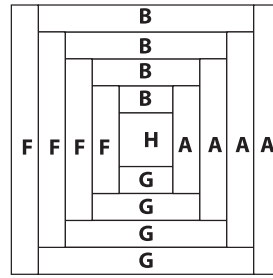
Fabric H



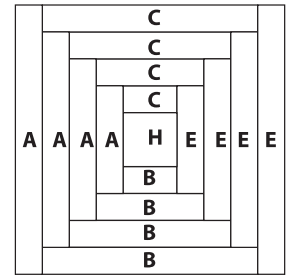
Make 2



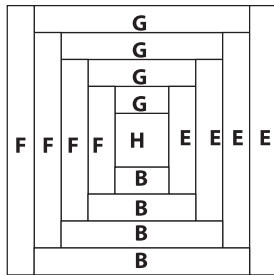
Make 1



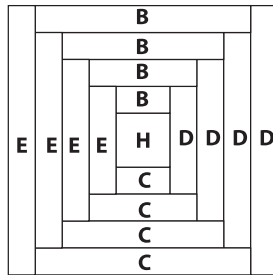
Make 2



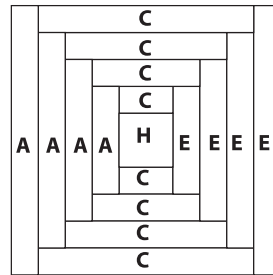
Make 1



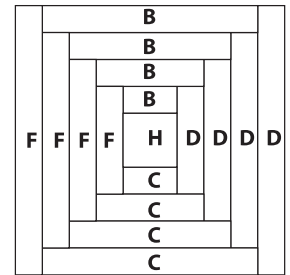
Make 1



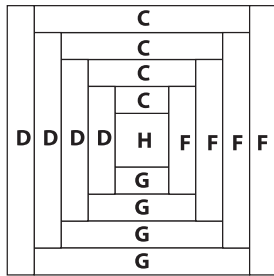
Make 3



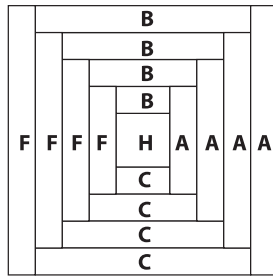
Make 1



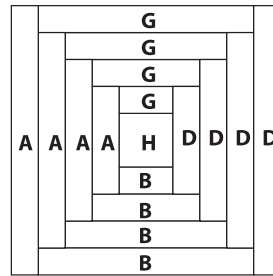
Make 1



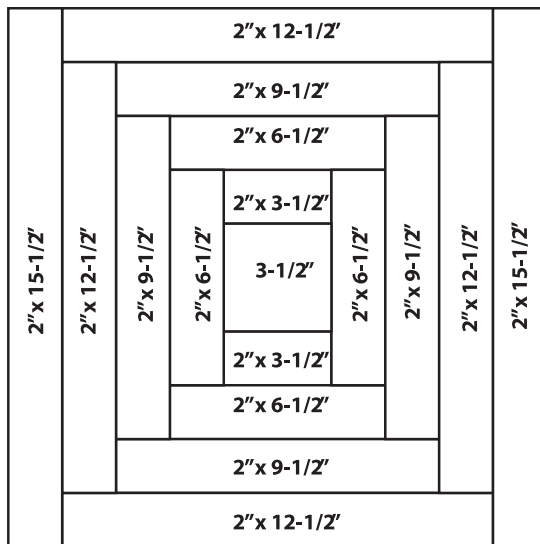
Make 2



Make 1



Make 1

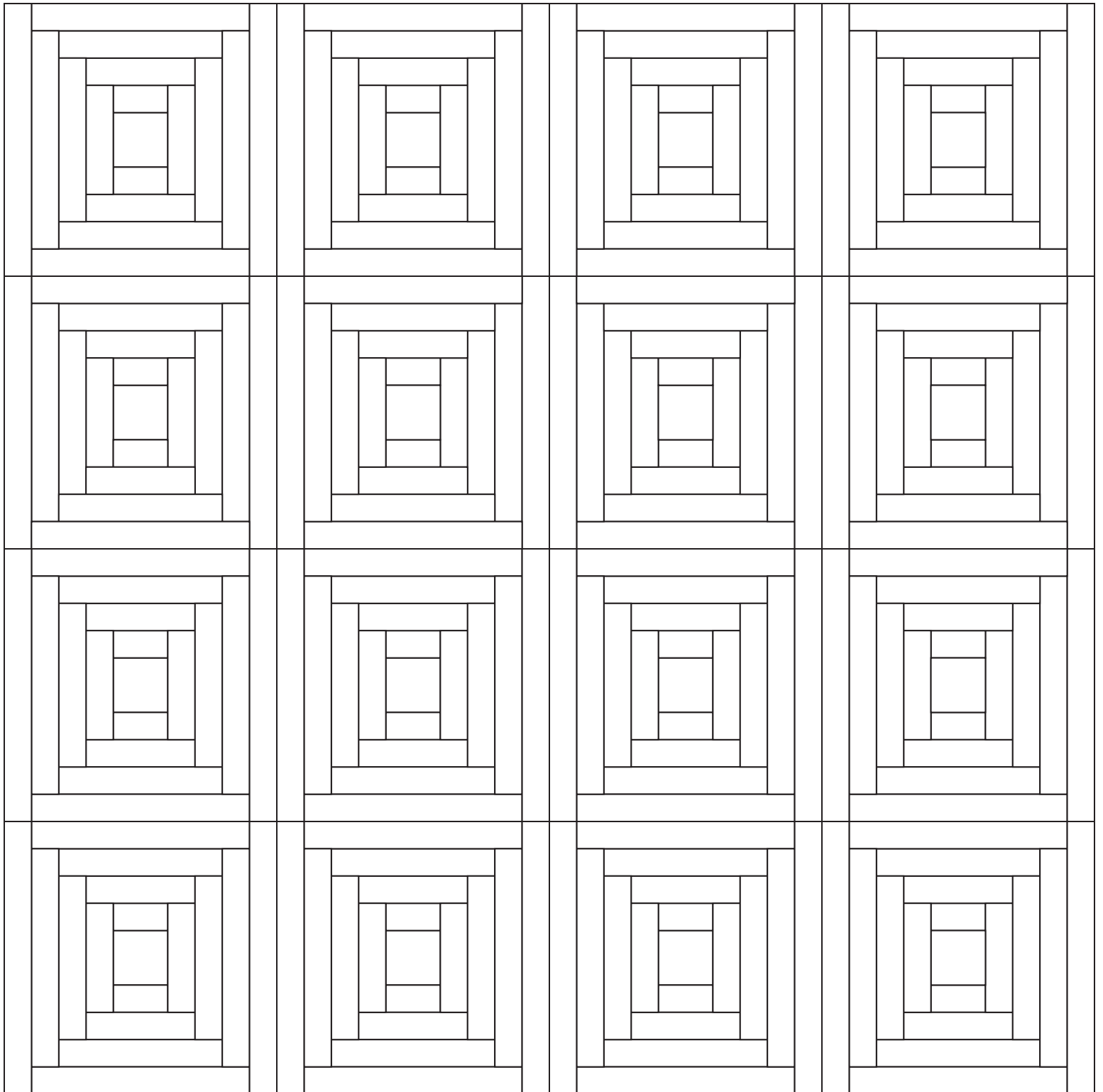


Block Piecing Diagram

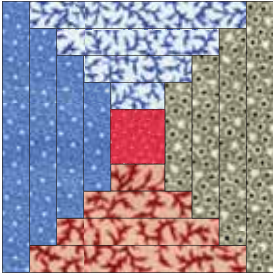
While all possible care has been taken to ensure the accuracy of this pattern, we are not responsible for printing errors or the way in which individual work varies.



Courthouse Steps Coloring Chart by Debby Kratovil
Use this to audition your fabrics or colors, to plan your fabric cuts.



Lancaster County Courthouse Steps Blocks Cutting Diagram, Page 1
 Cutting is for EACH block (not blocks total)



Make 2



Cut 1 square 3-1/2"



Cut 1 strip 2" x 3-1/2"
 Cut 1 strip 2" x 6-1/2"
 Cut 1 strip 2" x 9-1/2"
 Cut 1 strip 2" x 12-1/2"



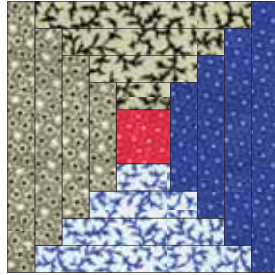
Cut 1 strip 2" x 3-1/2"
 Cut 1 strip 2" x 6-1/2"
 Cut 1 strip 2" x 9-1/2"
 Cut 1 strip 2" x 12-1/2"



Cut 1 strip 2" x 6-1/2"
 Cut 1 strip 2" x 9-1/2"
 Cut 1 strip 2" x 12-1/2"
 Cut 1 strip 2" x 15-1/2"



Cut 1 strip 2" x 6-1/2"
 Cut 1 strip 2" x 9-1/2"
 Cut 1 strip 2" x 12-1/2"
 Cut 1 strip 2" x 15-1/2"



Make 1



Cut 1 square 3-1/2"



Cut 1 strip 2" x 3-1/2"
 Cut 1 strip 2" x 6-1/2"
 Cut 1 strip 2" x 9-1/2"
 Cut 1 strip 2" x 12-1/2"



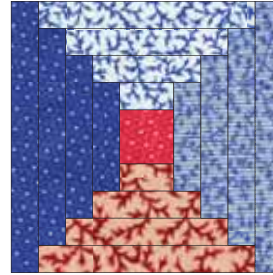
Cut 1 strip 2" x 3-1/2"
 Cut 1 strip 2" x 6-1/2"
 Cut 1 strip 2" x 9-1/2"
 Cut 1 strip 2" x 12-1/2"



Cut 1 strip 2" x 6-1/2"
 Cut 1 strip 2" x 9-1/2"
 Cut 1 strip 2" x 12-1/2"
 Cut 1 strip 2" x 15-1/2"



Cut 1 strip 2" x 6-1/2"
 Cut 1 strip 2" x 9-1/2"
 Cut 1 strip 2" x 12-1/2"
 Cut 1 strip 2" x 15-1/2"



Make 2



Cut 1 square 3-1/2"



Cut 1 strip 2" x 3-1/2"
 Cut 1 strip 2" x 6-1/2"
 Cut 1 strip 2" x 9-1/2"
 Cut 1 strip 2" x 12-1/2"



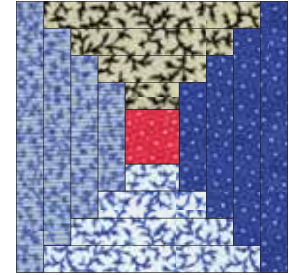
Cut 1 strip 2" x 3-1/2"
 Cut 1 strip 2" x 6-1/2"
 Cut 1 strip 2" x 9-1/2"
 Cut 1 strip 2" x 12-1/2"



Cut 1 strip 2" x 6-1/2"
 Cut 1 strip 2" x 9-1/2"
 Cut 1 strip 2" x 12-1/2"
 Cut 1 strip 2" x 15-1/2"



Cut 1 strip 2" x 6-1/2"
 Cut 1 strip 2" x 9-1/2"
 Cut 1 strip 2" x 12-1/2"
 Cut 1 strip 2" x 15-1/2"



Make 1



Cut 1 square 3-1/2"



Cut 1 strip 2" x 3-1/2"
 Cut 1 strip 2" x 6-1/2"
 Cut 1 strip 2" x 9-1/2"
 Cut 1 strip 2" x 12-1/2"



Cut 1 strip 2" x 3-1/2"
 Cut 1 strip 2" x 6-1/2"
 Cut 1 strip 2" x 9-1/2"
 Cut 1 strip 2" x 12-1/2"

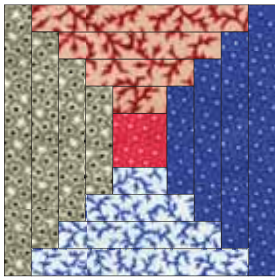


Cut 1 strip 2" x 6-1/2"
 Cut 1 strip 2" x 9-1/2"
 Cut 1 strip 2" x 12-1/2"
 Cut 1 strip 2" x 15-1/2"



Cut 1 strip 2" x 6-1/2"
 Cut 1 strip 2" x 9-1/2"
 Cut 1 strip 2" x 12-1/2"
 Cut 1 strip 2" x 15-1/2"

Lancaster County Courthouse Steps Blocks Cutting Diagram, Page 2



Make 1



Cut 1 square 3-1/2"



Cut 1 strip 2" x 3-1/2"
Cut 1 strip 2" x 6-1/2"
Cut 1 strip 2" x 9-1/2"
Cut 1 strip 2" x 12-1/2"



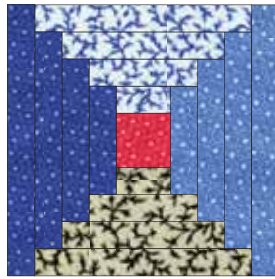
Cut 1 strip 2" x 3-1/2"
Cut 1 strip 2" x 6-1/2"
Cut 1 strip 2" x 9-1/2"
Cut 1 strip 2" x 12-1/2"



Cut 1 strip 2" x 6-1/2"
Cut 1 strip 2" x 9-1/2"
Cut 1 strip 2" x 12-1/2"
Cut 1 strip 2" x 15-1/2"



Cut 1 strip 2" x 6-1/2"
Cut 1 strip 2" x 9-1/2"
Cut 1 strip 2" x 12-1/2"
Cut 1 strip 2" x 15-1/2"



Make 3



Cut 1 square 3-1/2"



Cut 1 strip 2" x 3-1/2"
Cut 1 strip 2" x 6-1/2"
Cut 1 strip 2" x 9-1/2"
Cut 1 strip 2" x 12-1/2"



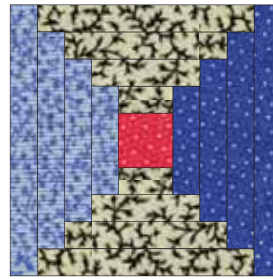
Cut 1 strip 2" x 3-1/2"
Cut 1 strip 2" x 6-1/2"
Cut 1 strip 2" x 9-1/2"
Cut 1 strip 2" x 12-1/2"



Cut 1 strip 2" x 6-1/2"
Cut 1 strip 2" x 9-1/2"
Cut 1 strip 2" x 12-1/2"
Cut 1 strip 2" x 15-1/2"



Cut 1 strip 2" x 6-1/2"
Cut 1 strip 2" x 9-1/2"
Cut 1 strip 2" x 12-1/2"
Cut 1 strip 2" x 15-1/2"



Make 1



Cut 1 square 3-1/2"



Cut 1 strip 2" x 3-1/2"
Cut 1 strip 2" x 6-1/2"
Cut 1 strip 2" x 9-1/2"
Cut 1 strip 2" x 12-1/2"



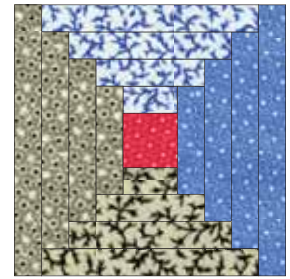
Cut 1 strip 2" x 3-1/2"
Cut 1 strip 2" x 6-1/2"
Cut 1 strip 2" x 9-1/2"
Cut 1 strip 2" x 12-1/2"



Cut 1 strip 2" x 6-1/2"
Cut 1 strip 2" x 9-1/2"
Cut 1 strip 2" x 12-1/2"
Cut 1 strip 2" x 15-1/2"



Cut 1 strip 2" x 6-1/2"
Cut 1 strip 2" x 9-1/2"
Cut 1 strip 2" x 12-1/2"
Cut 1 strip 2" x 15-1/2"



Make 1



Cut 1 square 3-1/2"



Cut 1 strip 2" x 3-1/2"
Cut 1 strip 2" x 6-1/2"
Cut 1 strip 2" x 9-1/2"
Cut 1 strip 2" x 12-1/2"



Cut 1 strip 2" x 3-1/2"
Cut 1 strip 2" x 6-1/2"
Cut 1 strip 2" x 9-1/2"
Cut 1 strip 2" x 12-1/2"

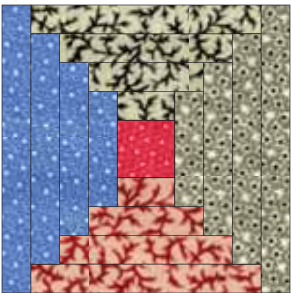


Cut 1 strip 2" x 6-1/2"
Cut 1 strip 2" x 9-1/2"
Cut 1 strip 2" x 12-1/2"
Cut 1 strip 2" x 15-1/2"



Cut 1 strip 2" x 6-1/2"
Cut 1 strip 2" x 9-1/2"
Cut 1 strip 2" x 12-1/2"
Cut 1 strip 2" x 15-1/2"

Lancaster County Courthouse Steps Blocks Cutting Diagram, Page 3



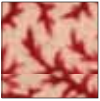
Make 2



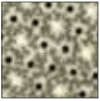
Cut 1 square 3-1/2"



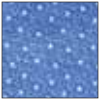
Cut 1 strip 2" x 3-1/2"
 Cut 1 strip 2" x 6-1/2"
 Cut 1 strip 2" x 9-1/2"
 Cut 1 strip 2" x 12-1/2"



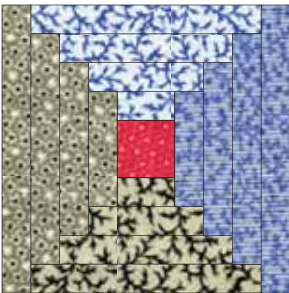
Cut 1 strip 2" x 3-1/2"
 Cut 1 strip 2" x 6-1/2"
 Cut 1 strip 2" x 9-1/2"
 Cut 1 strip 2" x 12-1/2"



Cut 1 strip 2" x 6-1/2"
 Cut 1 strip 2" x 9-1/2"
 Cut 1 strip 2" x 12-1/2"
 Cut 1 strip 2" x 15-1/2"



Cut 1 strip 2" x 6-1/2"
 Cut 1 strip 2" x 9-1/2"
 Cut 1 strip 2" x 12-1/2"
 Cut 1 strip 2" x 15-1/2"



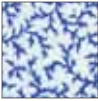
Make 1



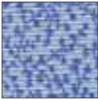
Cut 1 square 3-1/2"



Cut 1 strip 2" x 3-1/2"
 Cut 1 strip 2" x 6-1/2"
 Cut 1 strip 2" x 9-1/2"
 Cut 1 strip 2" x 12-1/2"



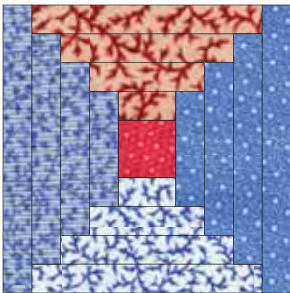
Cut 1 strip 2" x 3-1/2"
 Cut 1 strip 2" x 6-1/2"
 Cut 1 strip 2" x 9-1/2"
 Cut 1 strip 2" x 12-1/2"



Cut 1 strip 2" x 6-1/2"
 Cut 1 strip 2" x 9-1/2"
 Cut 1 strip 2" x 12-1/2"
 Cut 1 strip 2" x 15-1/2"



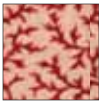
Cut 1 strip 2" x 6-1/2"
 Cut 1 strip 2" x 9-1/2"
 Cut 1 strip 2" x 12-1/2"
 Cut 1 strip 2" x 15-1/2"



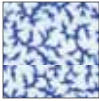
Make 1



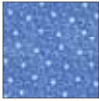
Cut 1 square 3-1/2"



Cut 1 strip 2" x 3-1/2"
 Cut 1 strip 2" x 6-1/2"
 Cut 1 strip 2" x 9-1/2"
 Cut 1 strip 2" x 12-1/2"



Cut 1 strip 2" x 3-1/2"
 Cut 1 strip 2" x 6-1/2"
 Cut 1 strip 2" x 9-1/2"
 Cut 1 strip 2" x 12-1/2"



Cut 1 strip 2" x 6-1/2"
 Cut 1 strip 2" x 9-1/2"
 Cut 1 strip 2" x 12-1/2"
 Cut 1 strip 2" x 15-1/2"



Cut 1 strip 2" x 6-1/2"
 Cut 1 strip 2" x 9-1/2"
 Cut 1 strip 2" x 12-1/2"
 Cut 1 strip 2" x 15-1/2"

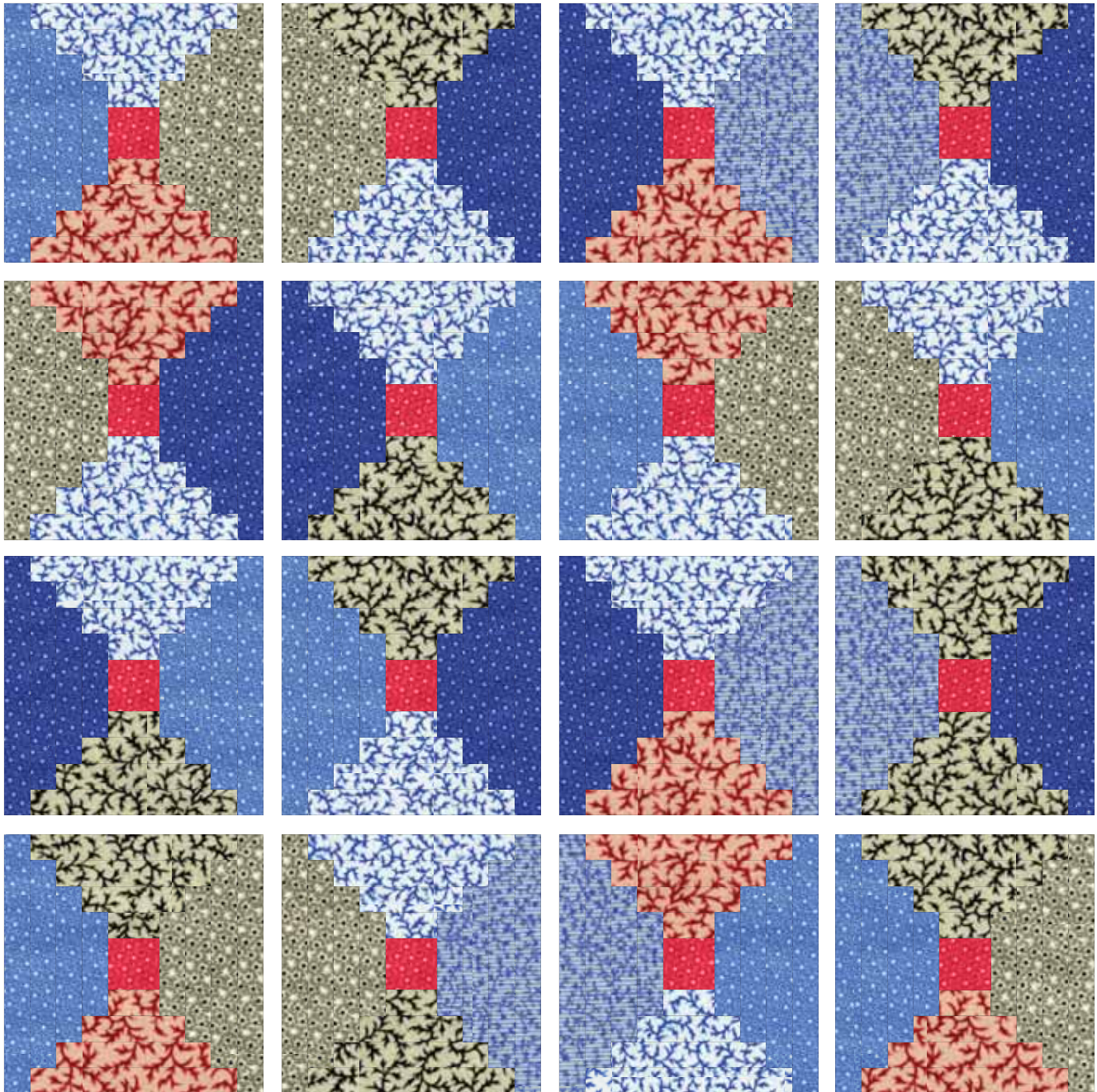
Courthouse Steps Blocks Separated

The following chart shows the Courthouse Steps blocks individually to help with color placement.

There are 16 blocks which finish to 15".

All strips (other than center 3" square) are cut 2" wide.

Refer to previous page for number of blocks of each coloring.



Quilt designed by Debby Kratovil for Blank Quilting, 2010. This is copyrighted material!